

LAMELA

B

BROJ
SPAVAĆIH
SOBA

2

KORISNA
POVRŠINA

50,06m²

SPRAT STAN

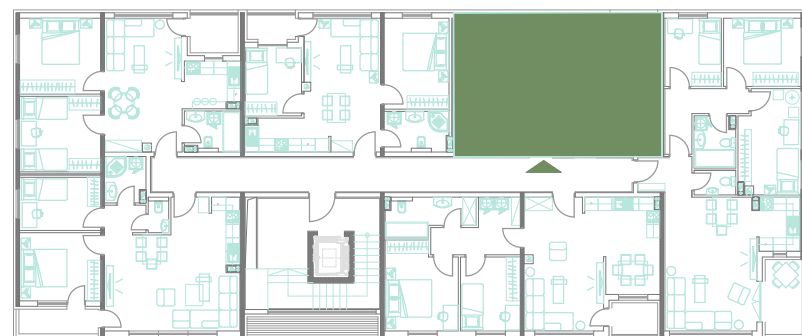
I 4

II 10

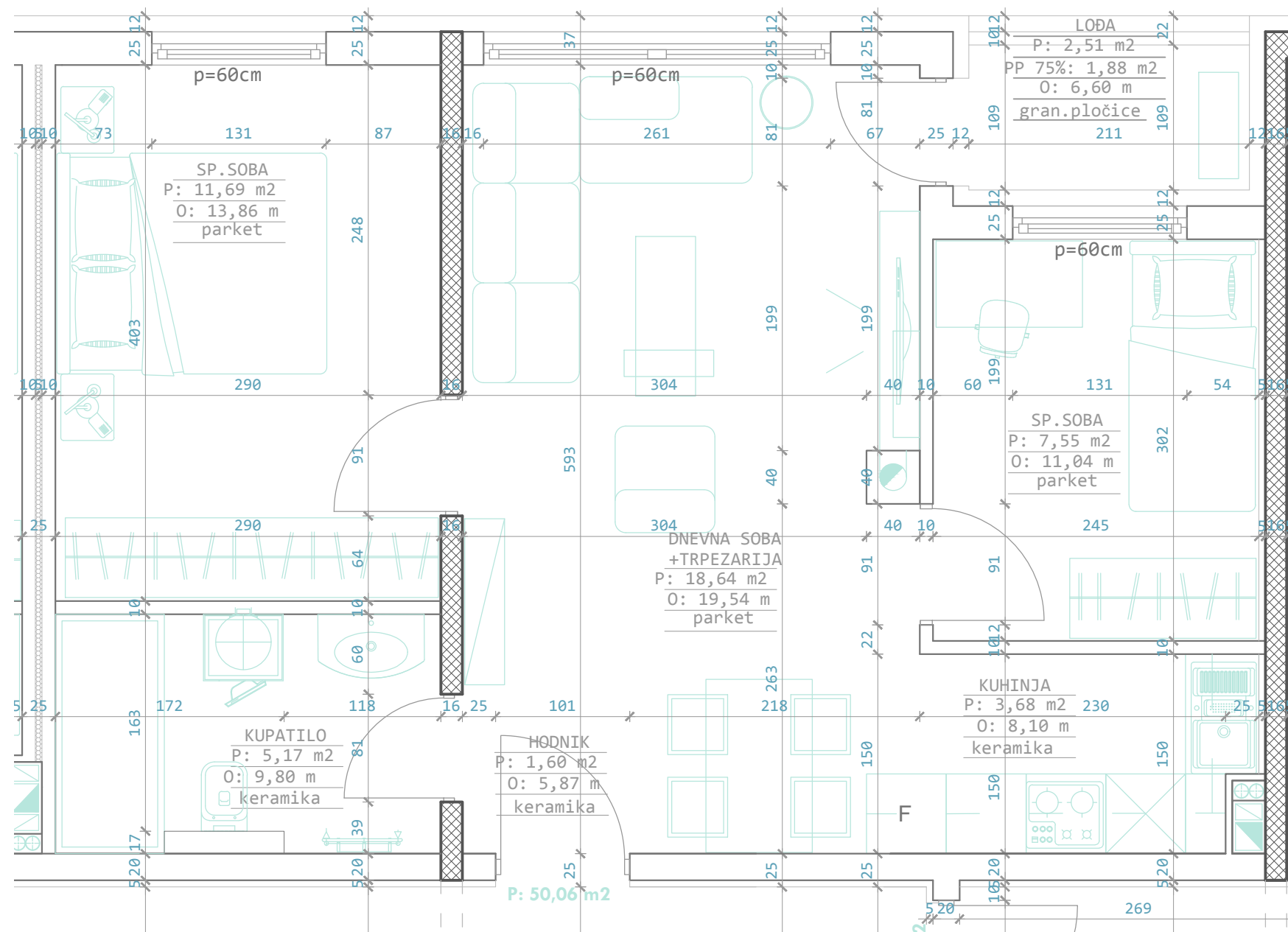
III 16

IV 22

V 28



	POVRŠINA PODA	koef.	KORISNA P.
Hodnik	1.60m ²	1	1.60m ²
Kuhinja	3.68m ²	1	3.68m ²
Dnevni boravak +trpezarija	18.64m ²	1	18.64m ²
Kupatilo	5.17m ²	1	5.17m ²
Spavaća soba	11.69m ²	1	11.69m ²
Spavaća soba	7.40m ²	1	7.40m ²
Lođa	2.51m ²	0.75	1.88m ²
UKUPNO:	50.69m²		50.06m²



LAMELA B