

LAMELA

D

BROJ  
SPAVAČIH  
SOBA

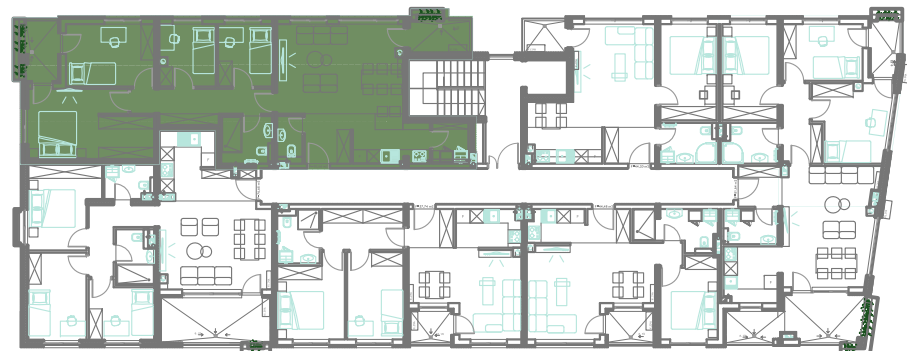
4

KORISNA  
POVRŠINA

95,64m<sup>2</sup>

SPRAT STAN

IV 30



	POVRŠINA PODA	koef.	KORISNA P.
Hodnik	4.44m <sup>2</sup>	1	4.44m <sup>2</sup>
Kuhinja	7.03m <sup>2</sup>	1	7.03m <sup>2</sup>
Ostava	2.95m <sup>2</sup>	1	2.95m <sup>2</sup>
Dnevni boravak +trpezarija	22.12m <sup>2</sup>	1	22.12m <sup>2</sup>
Kupatilo	4.77m <sup>2</sup>	1	4.77m <sup>2</sup>
Toalet	2.36m <sup>2</sup>	1	2.36m <sup>2</sup>
Degažman	8.24m <sup>2</sup>	1	8.24m <sup>2</sup>
Spavaća soba	15.88m <sup>2</sup>	1	15.88m <sup>2</sup>
Spavaća soba	10.78m <sup>2</sup>	1	10.78m <sup>2</sup>
Spavaća soba	6.77m <sup>2</sup>	1	6.77m <sup>2</sup>
Spavaća soba	6.65m <sup>2</sup>	1	6.65m <sup>2</sup>
Lođa	3.70m <sup>2</sup>	0.5	1.85m <sup>2</sup>
Lođa	3.59m <sup>2</sup>	0.5	1.80m <sup>2</sup>
<b>UKUPNO:</b>	<b>99.28m<sup>2</sup></b>		<b>95.64m<sup>2</sup></b>

