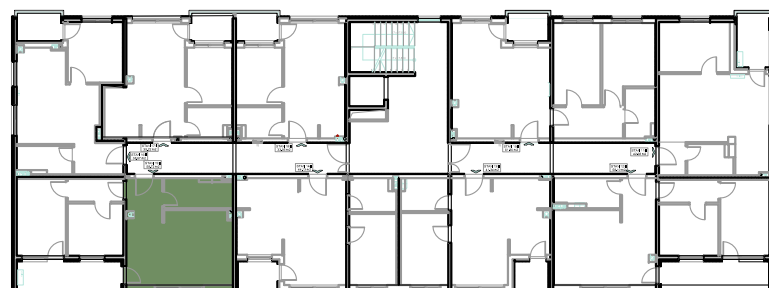
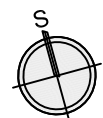
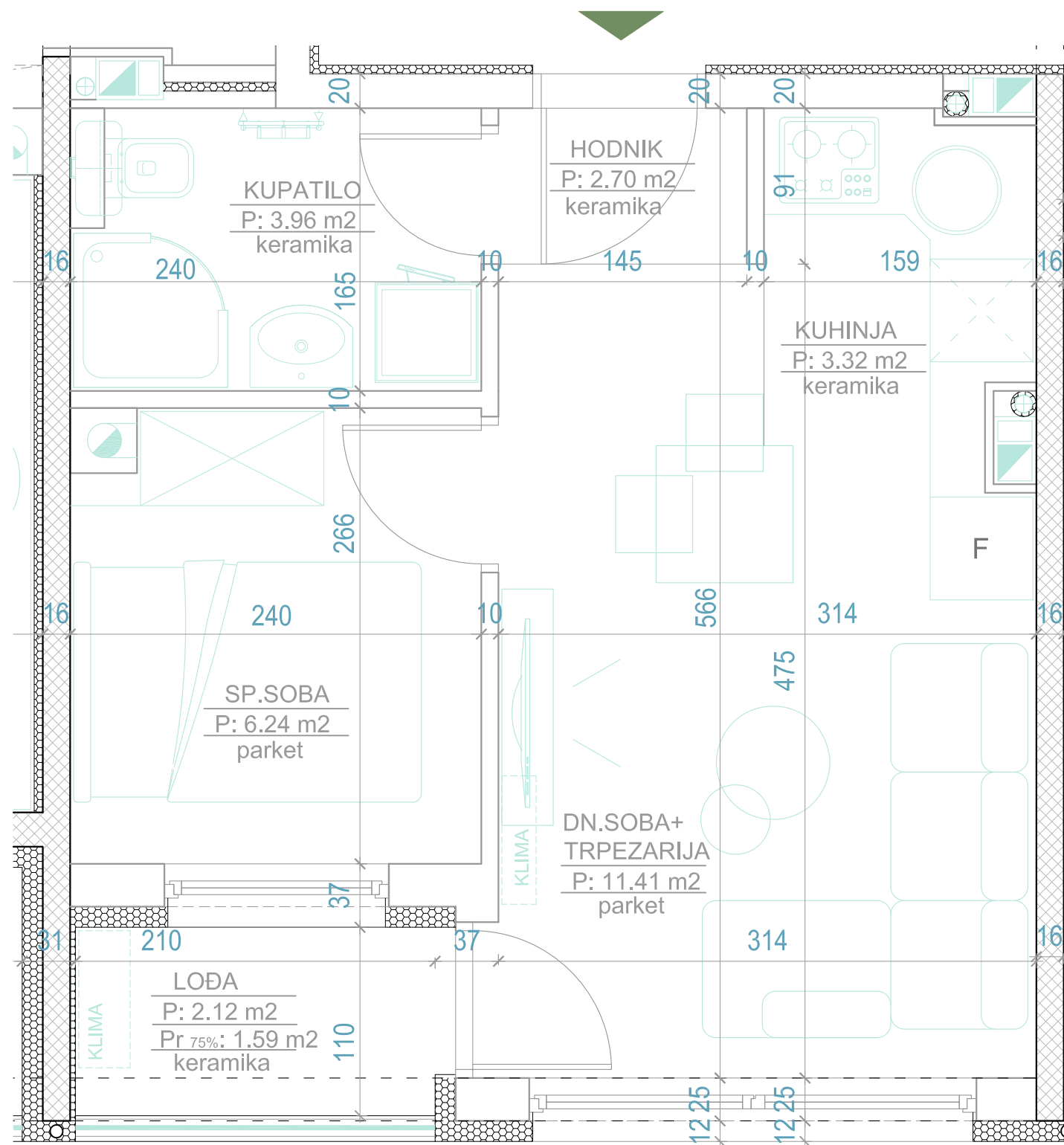


stan 24 i 32



	POVRŠINA PODA	koef.	KORISNA P.
Hodnik	2.70m ²	1	2.70m ²
Kuhinja	3.32m ²	1	3.32m ²
Dnevni boravak +trpezarija	11.41m ²	1	11.41m ²
Kupatilo	3.96m ²	1	3.96m ²
Spavaća soba	6.24m ²	1	6.24m ²
Lođa	2.12m ²	0.75	1.59m ²
UKUPNO	29.75m²		29.22m²



LAMELA

C

BROJ
SPAVAĆIH
SOBA

1

KORISNA
POVRŠINA

29.22 m²

SPRAT STAN

III 24

IV 32

LAMELA C