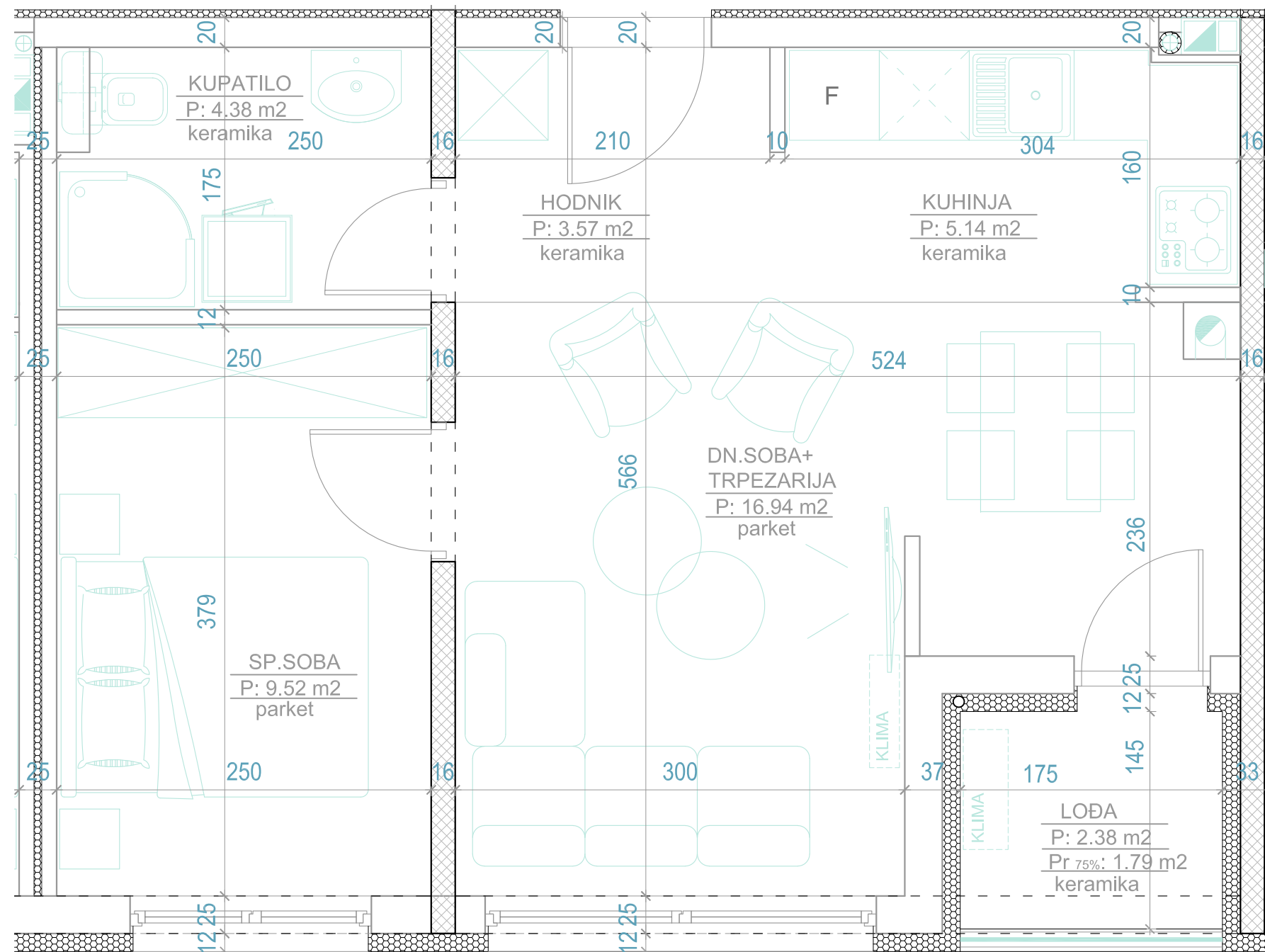
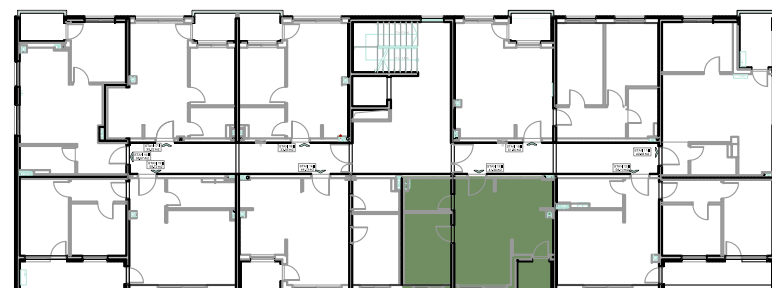
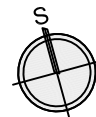


stan 4, 13, 22 i 30



	POVRŠINA PODA	koef.	KORISNA P.
Hodnik	3.57m ²	1	3.57m ²
Kuhinja	5.14m ²	1	5.14m ²
Dnevni boravak +trpezarija	16.94m ²	1	16.94m ²
Kupatilo	4.38m ²	1	4.38m ²
Spavaća soba	9.52m ²	1	9.52m ²
Lođa	2.38m ²	0.75	1.79m ²
UKUPNO	41.93m²		41.34m²

LAMELA

C

BROJ
SPAVAĆIH
SOBA

1

KORISNA
POVRŠINA

41.34 m²

SPRAT STAN

I 4

II 13

III 22

IV 30

LAMELA C